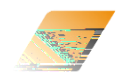








01



02



03



04



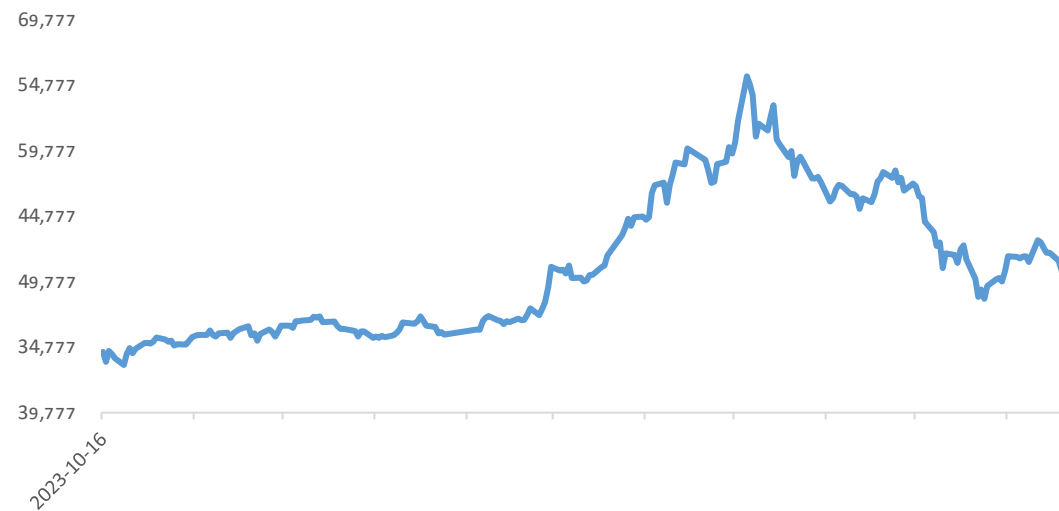
05



06



LME

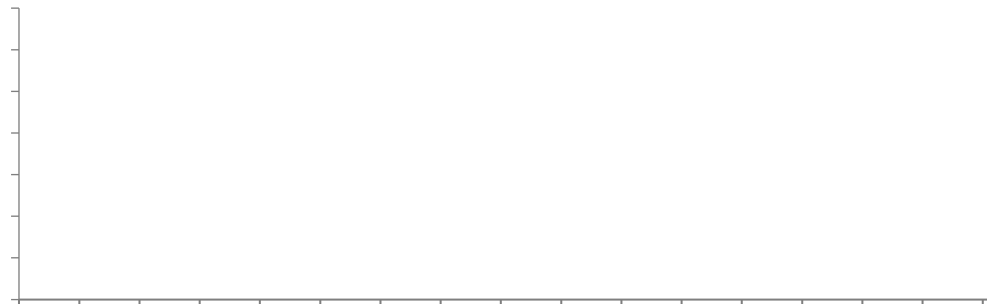


Wind

✓

✓



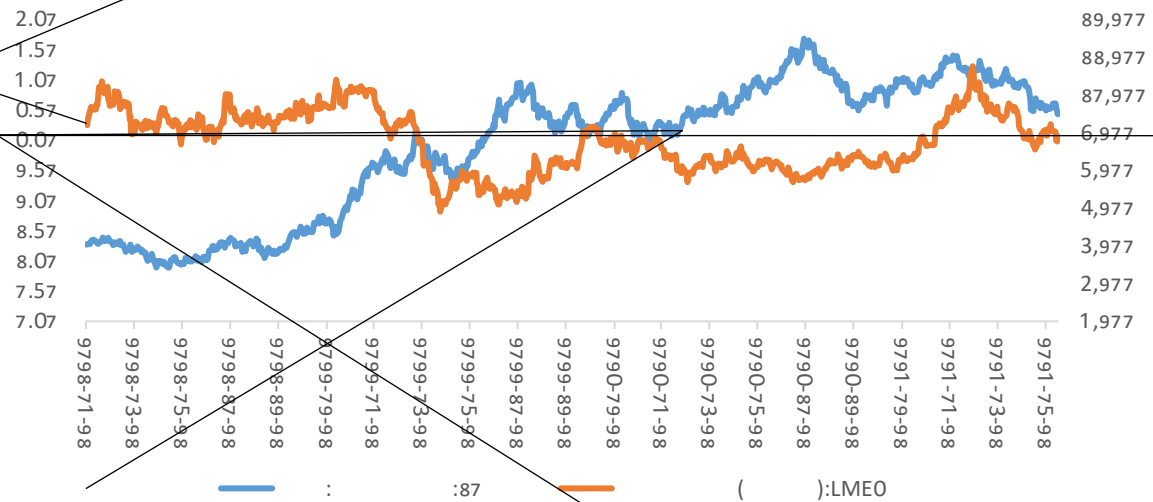


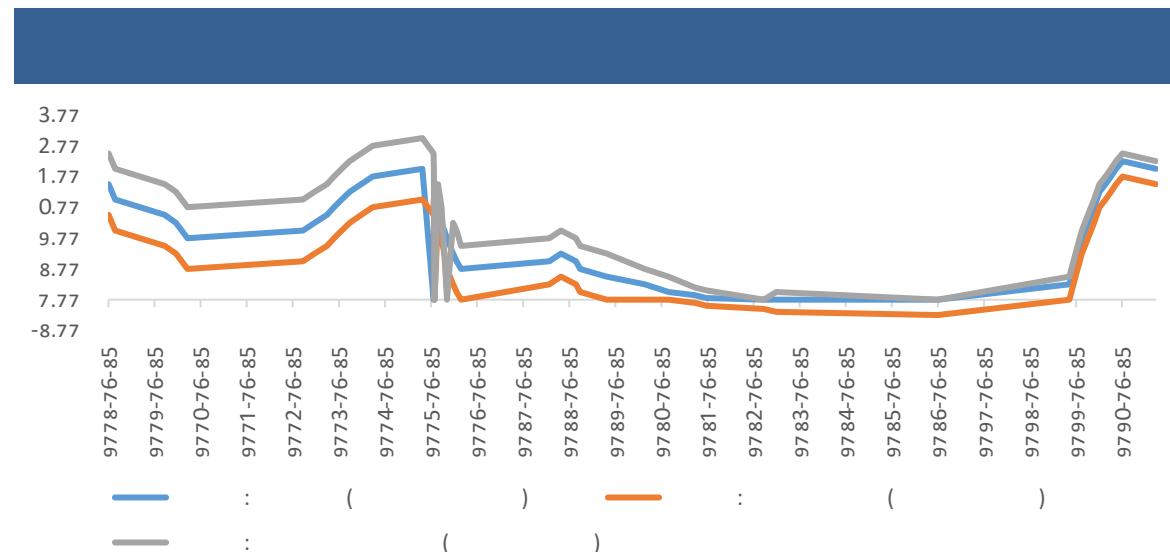
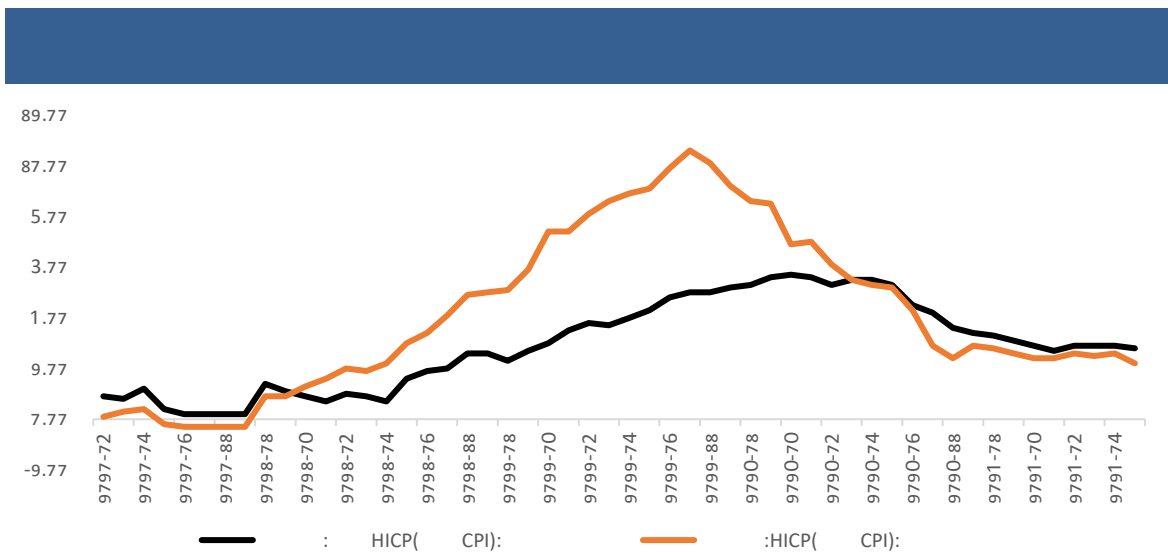
ISM

GDP

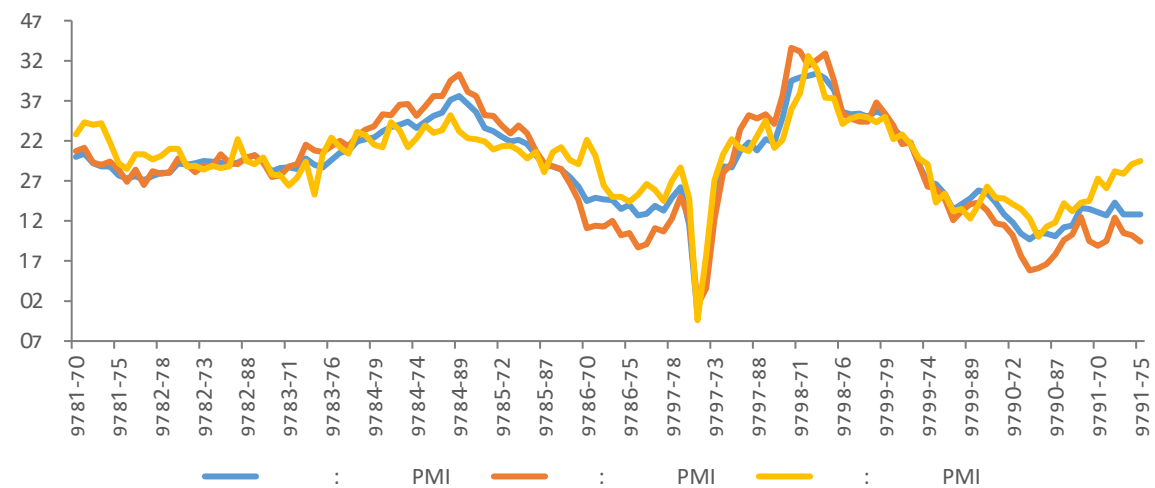
LME

10

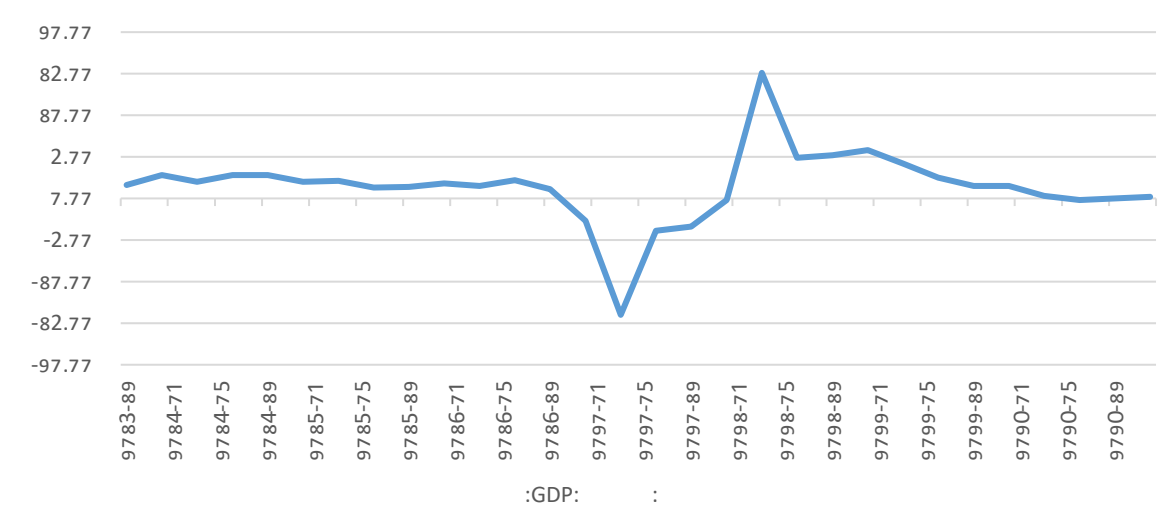




PMI

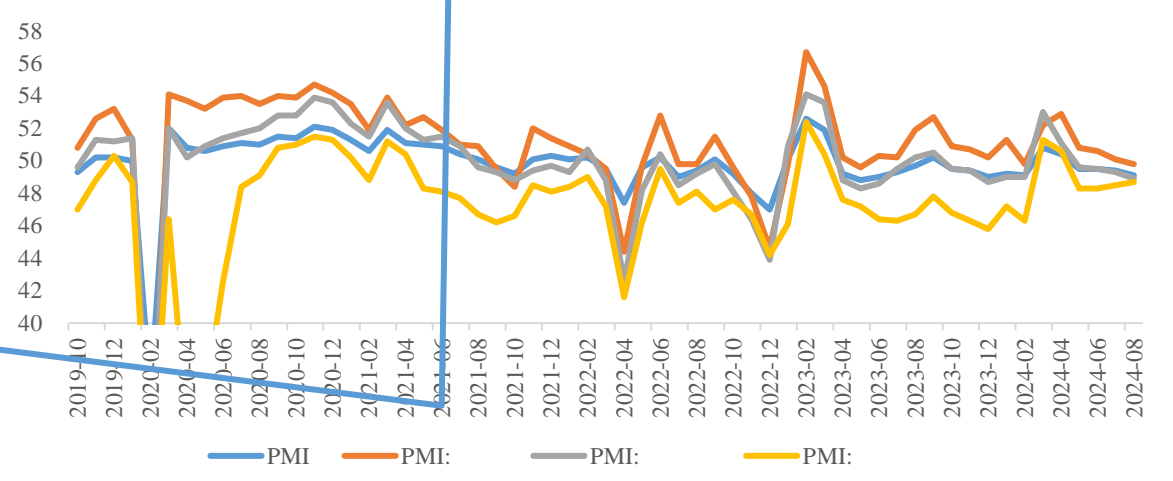


GDP



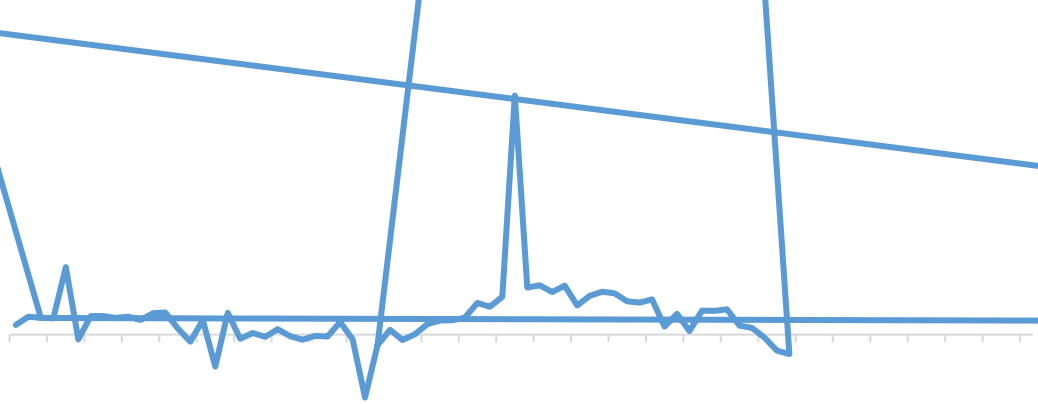
30 : :

PMI



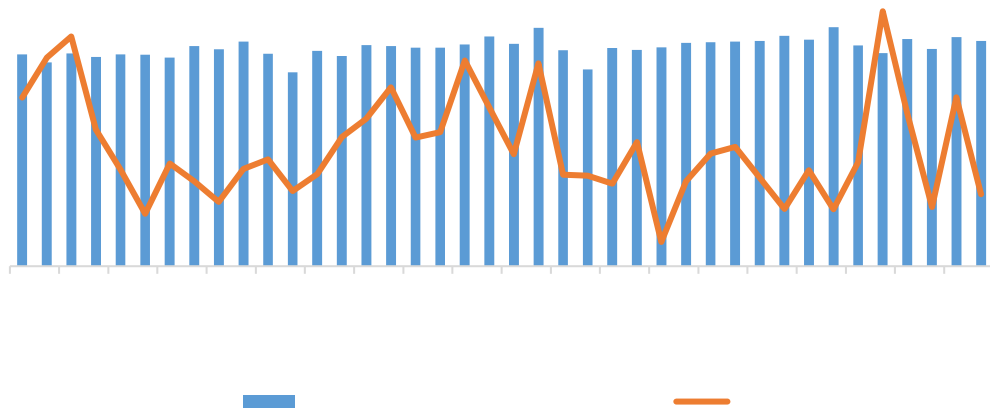
[Redacted]

[Redacted]

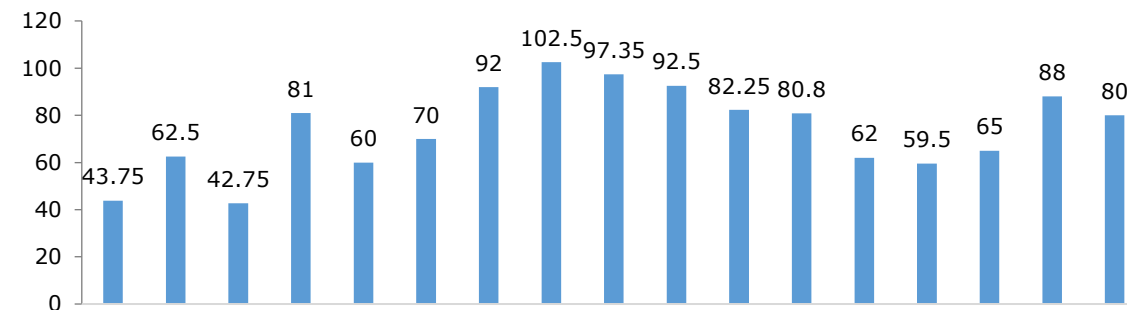




[Blank Title Bar]

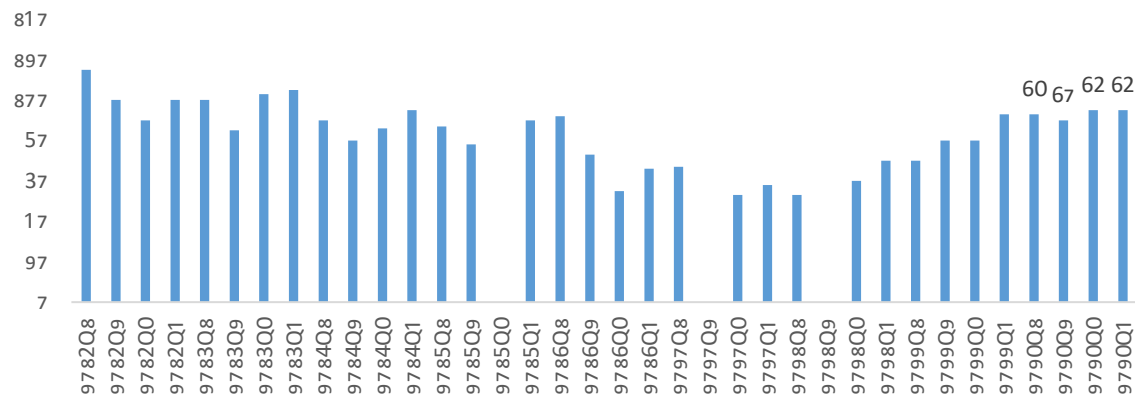


TC

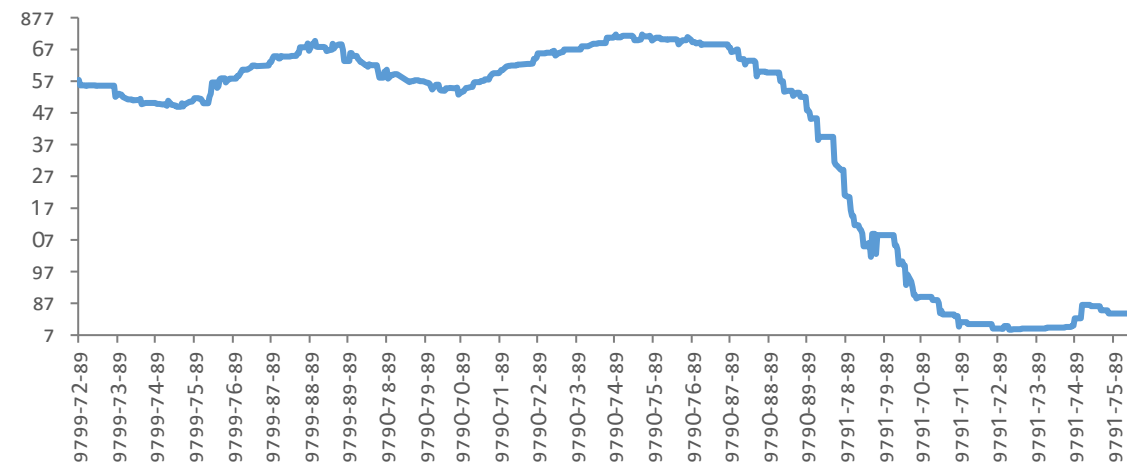


CSPT

CSPT group benchmark



[Blank Title Bar]



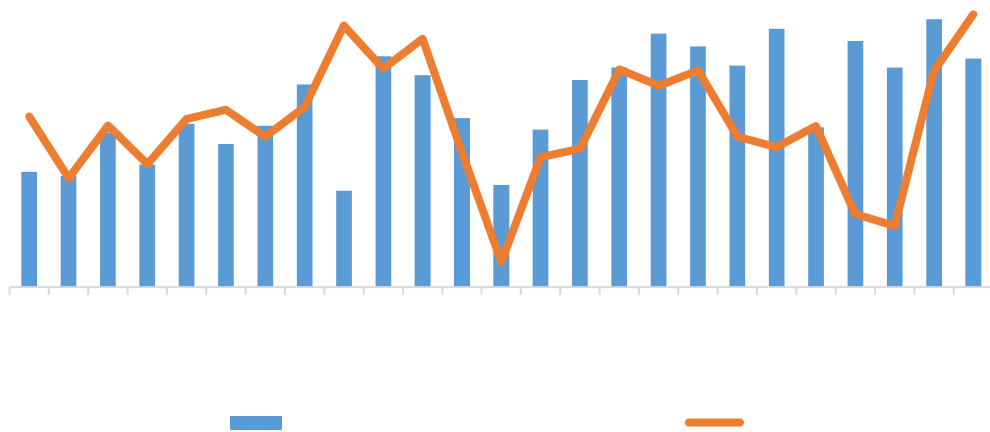
1-7

+7.11% 7

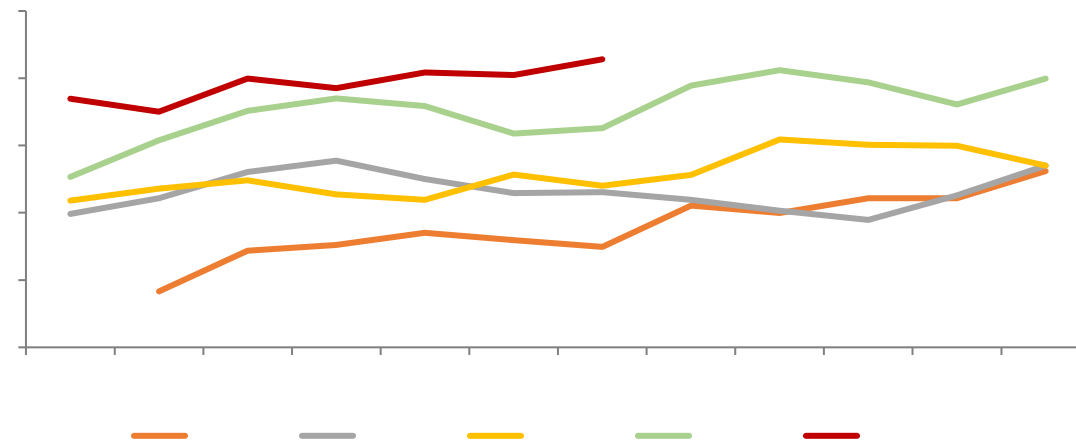
102.8

+11.05%

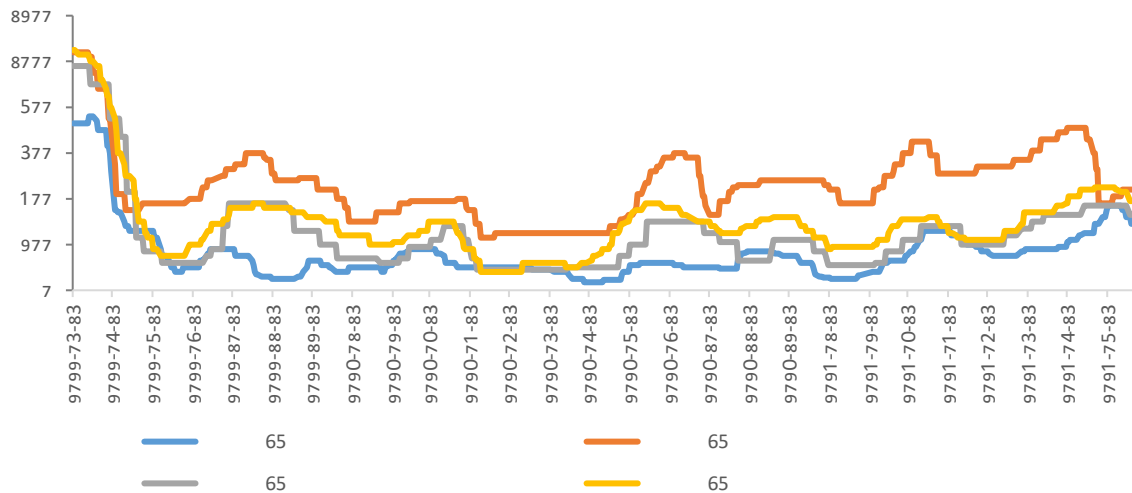
Bar chart header



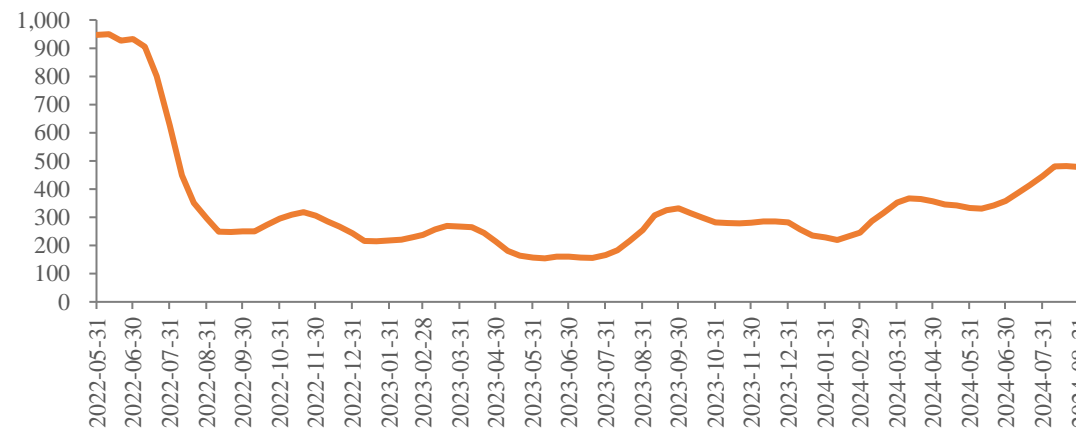
SMM Line chart header



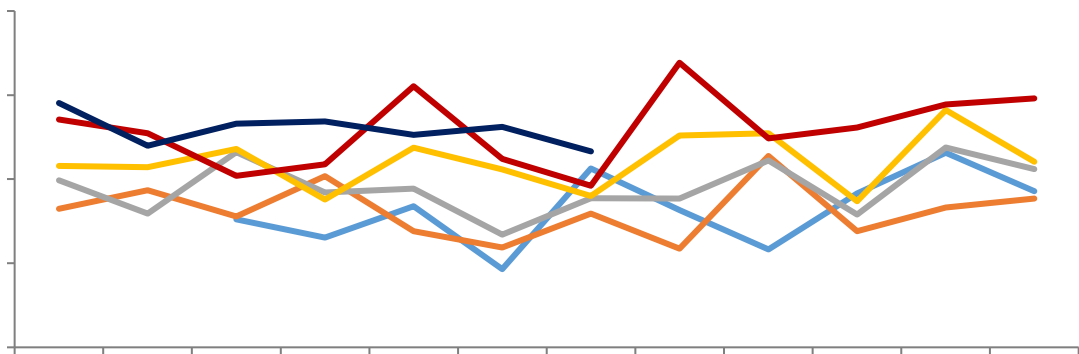
Line chart header

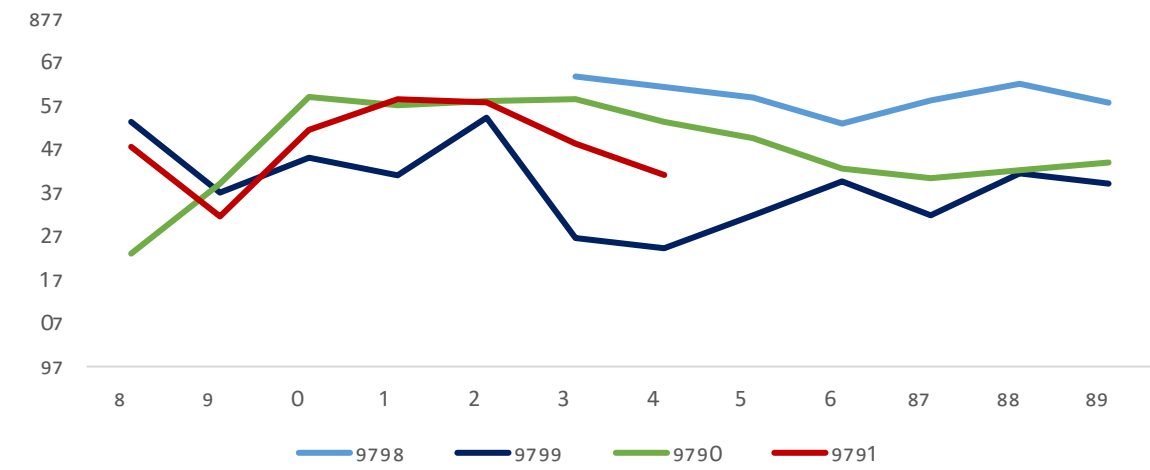
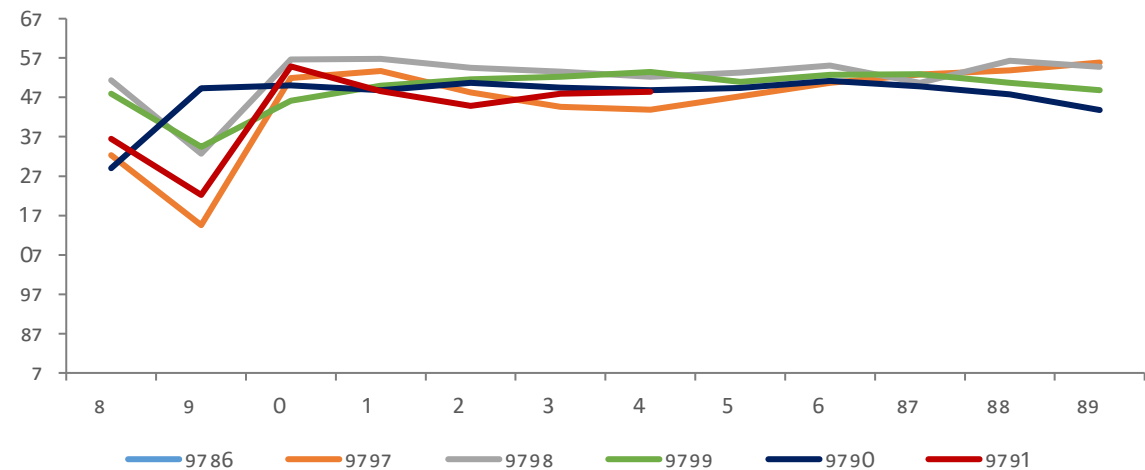
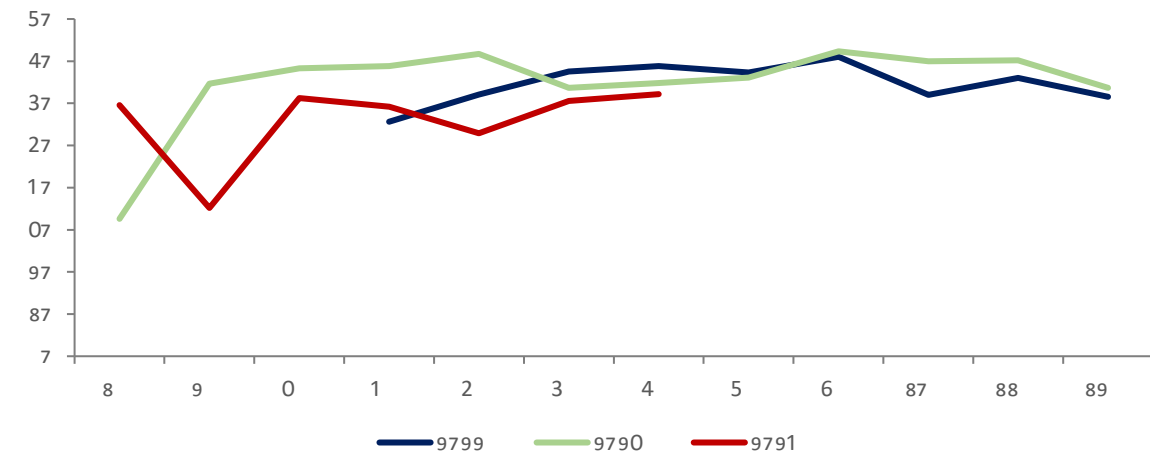
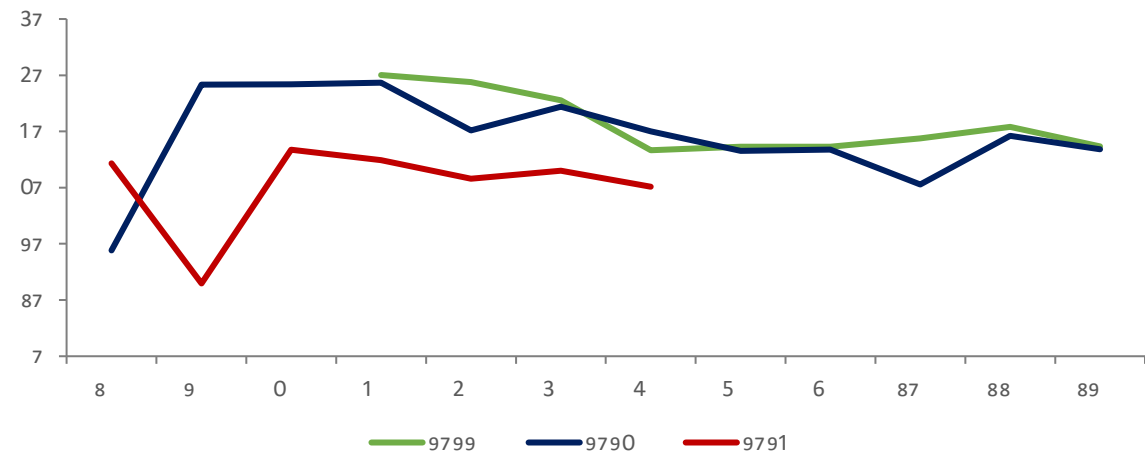


: (98%):

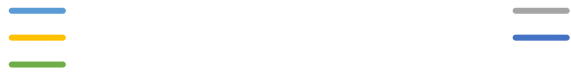
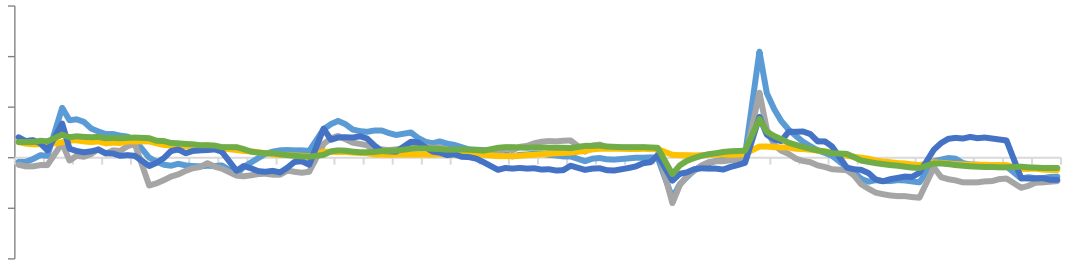




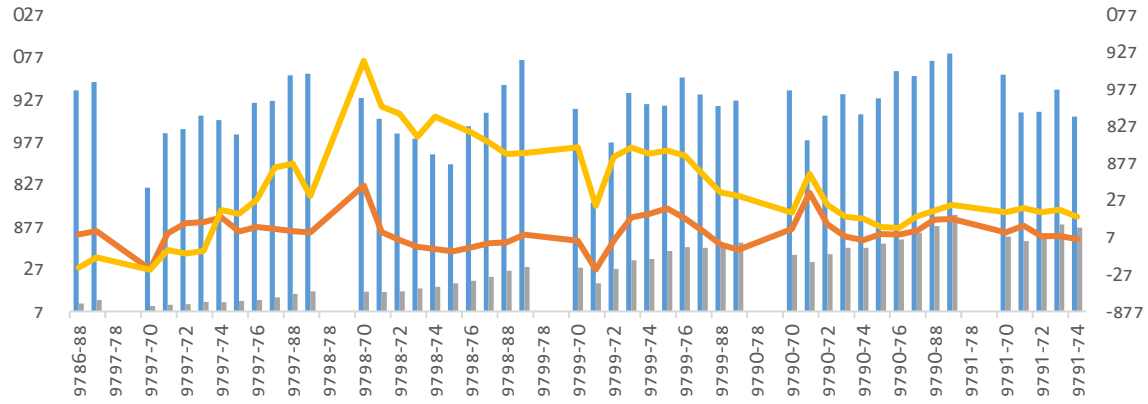




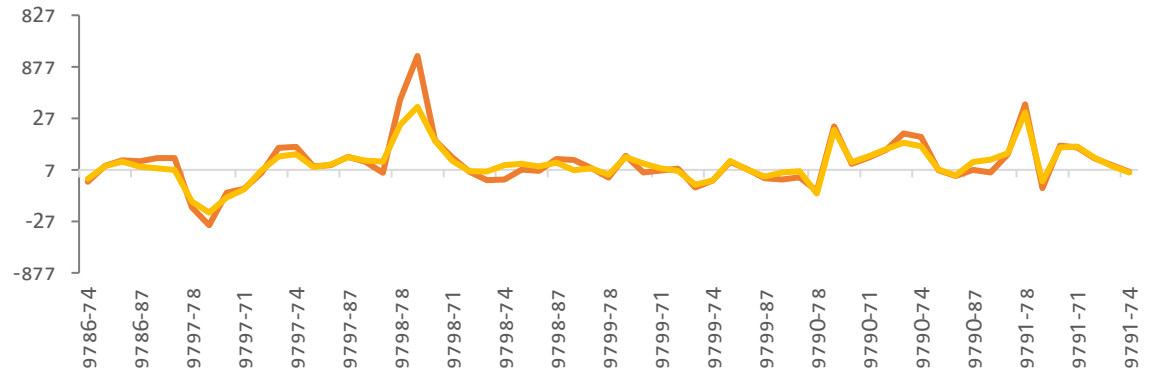
Line chart header



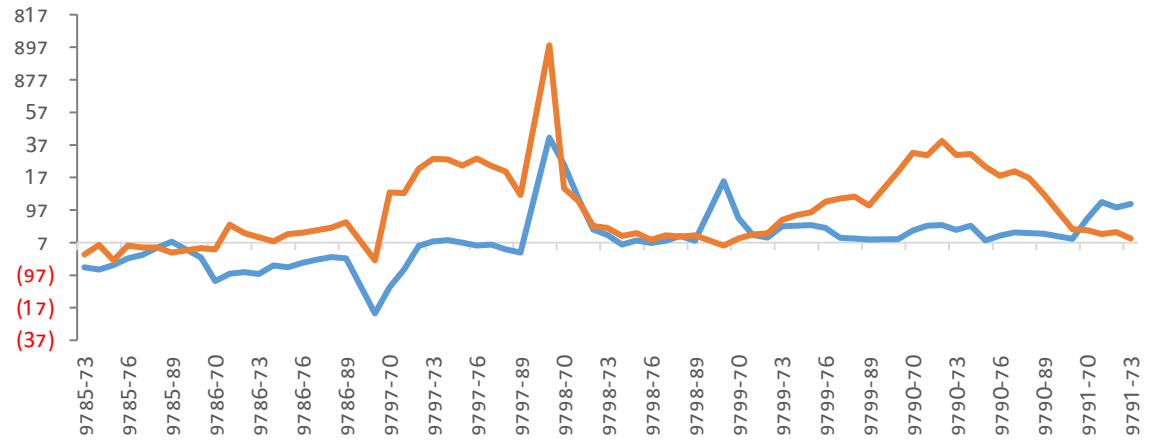
Bar and line chart header



Line chart header



Line chart header

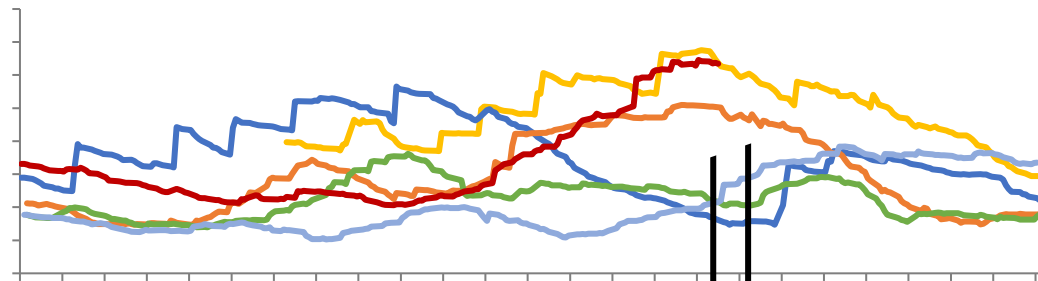




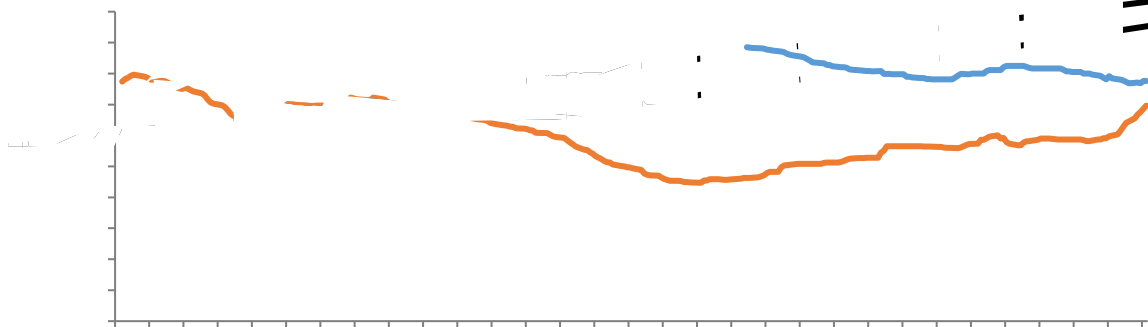
LME COMEX

SHFE

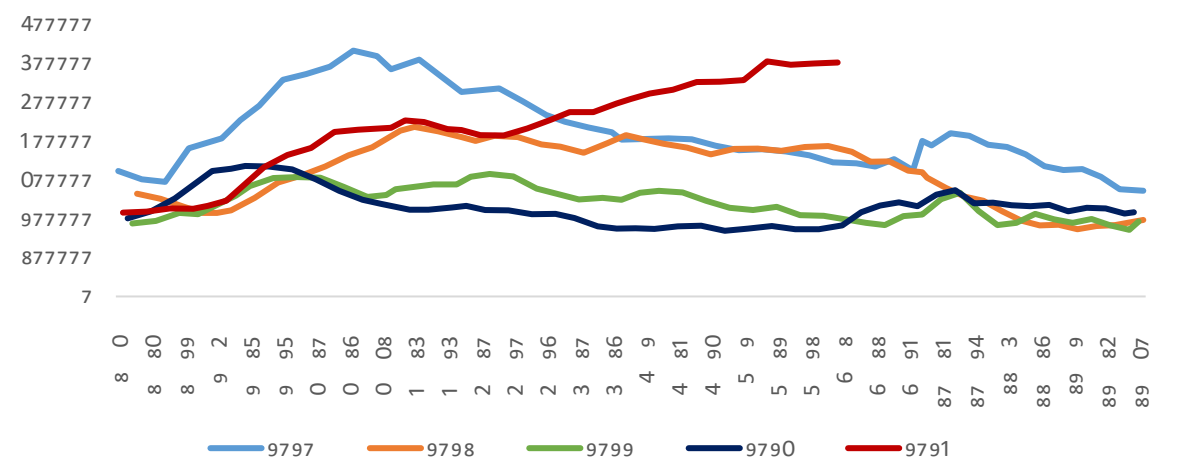
LME



COMEX

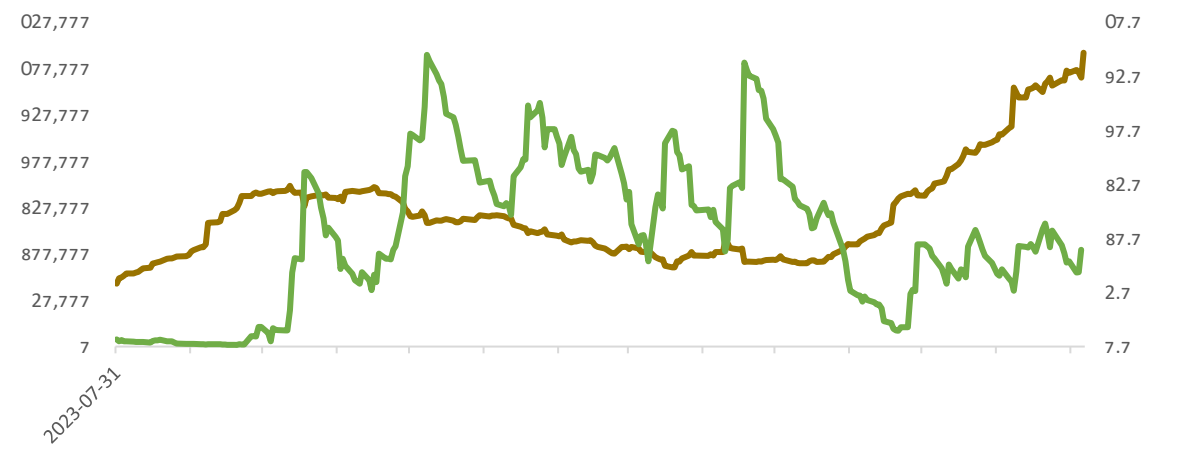


SHFE

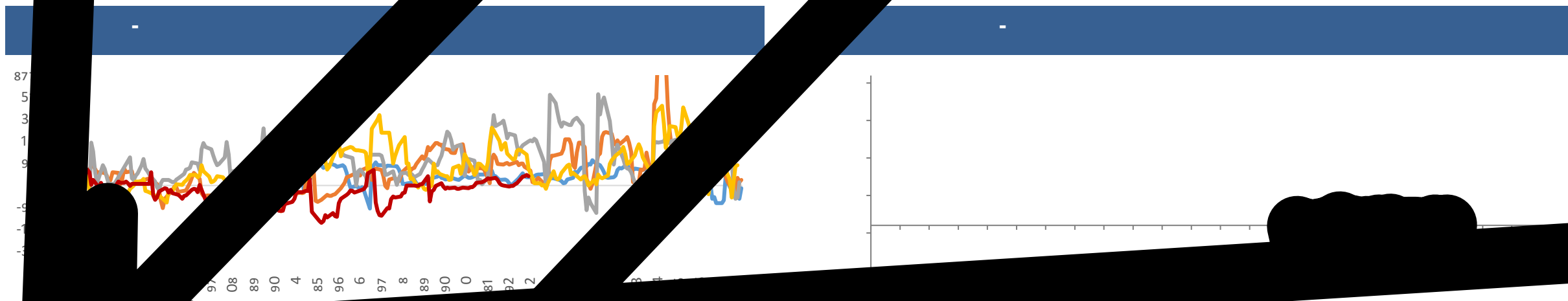


SHFE

LME



LME

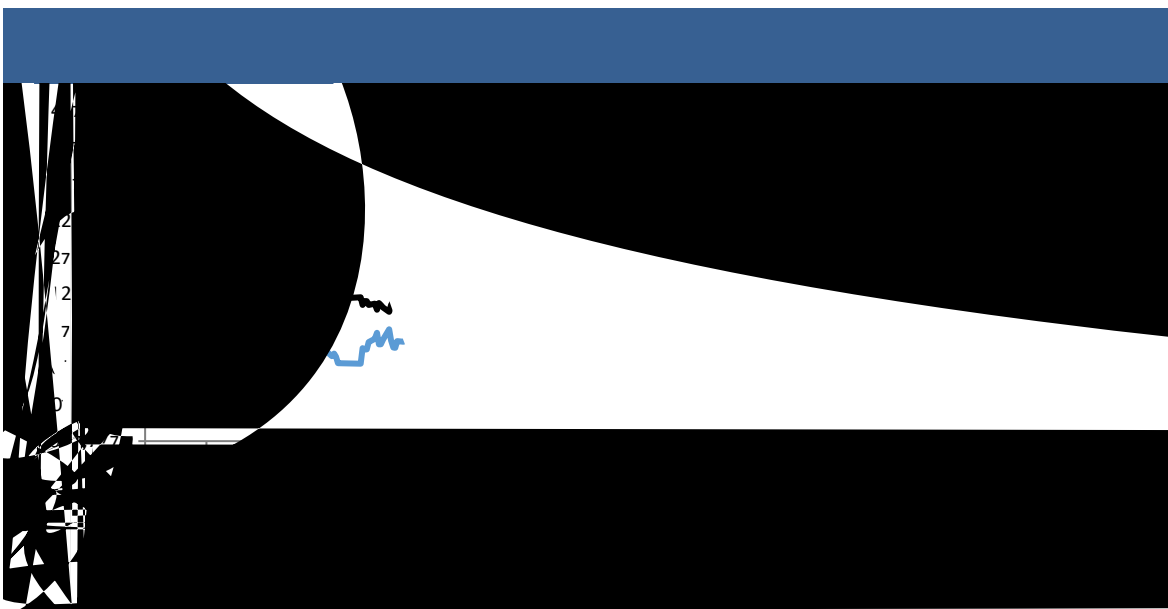


L



CFTC

LME





/

➤ ADP Research Institute 5 ADP
6.6 9798 8 81.2 89.9

➤ 5 ISM 28.2 28.1 4 28.1 27

➤

➤

➤

021- 68905325 388 69 1 20 22 03A-3 04B	0571-89809624 111 2 1301	028-83279757 4 12 6 802	0757-88772666 28 2 2301 2302
0755-83533302 704A 705 A 57 2 3006	0757-83607028 2 1501B	0769-22900598 193 A 14 1401-9	0763-3808515 25 2 04 05 06
0758-2270761 1704 1705 2	010-63360528 24 1 - 5 32 101 12 1211	027-59219121 193 A 14 1401-9	0371-86533821 80 1 2 23 2301
0532-88910060 100 905	020-22836158 1 6	020-22836155 1 6	020-22836182 1 6
020-22836185 6 1	020-22836187 1 6	021-50390172 388 22 2201	

